

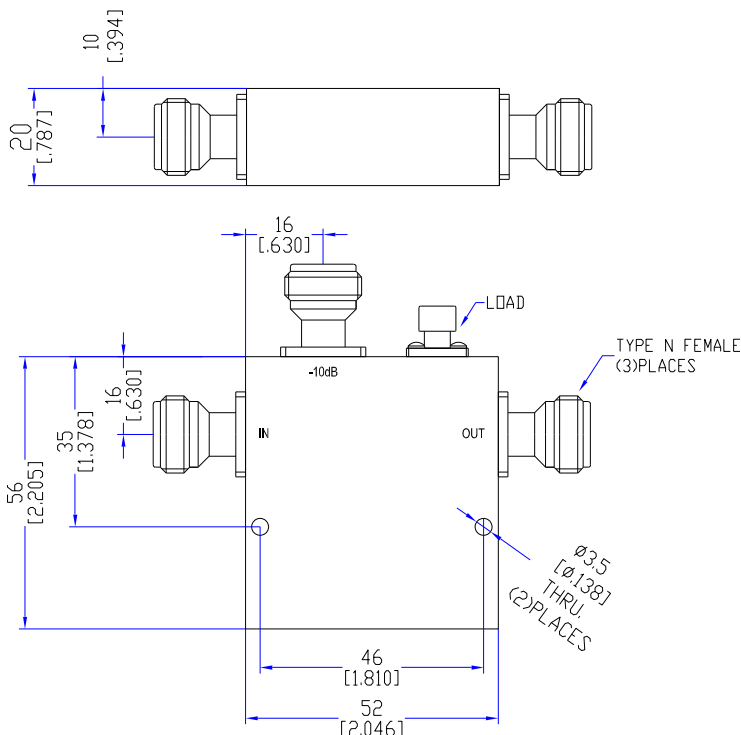
Model TDC0304N10A

Features

Low VSWR
High Directivity
Broadband & Miniature Size

Technical Data Sheet			
Frequency Range	350~450MHz	Finish	Painted Blue_ RAL #5007
Insertion Loss	≤0.4dB (Excl. Coupling Loss 0.46dB)	Connector Body	Brass, Tri-Alloy Plate
Coupling Factor	≤10±1dB	Housing	Aluminum, 6061 T6 Clear Chem Conversion Film
Coupling Sensitivity	≤±0.5dB	Connector Pin	Beryllium Copper, Gold Plate
Directivity	≥20dB	Solder	Lead Free, RoHS Compliant
VSWR	Primary ≤1.20:1 Secondary ≤1.20:1	Operating Temperature	-20~+70°C
¹ Power Handling	Incident ≤50Watt; Reflected ≤5Watt	Operating Humidity	Up to 95%, Non- Condensing
Impedance	50Ω	Weight	230g
Port Connectors	N-Female		

¹Power Handling guaranteed when load's VSWR within 1.50:1.

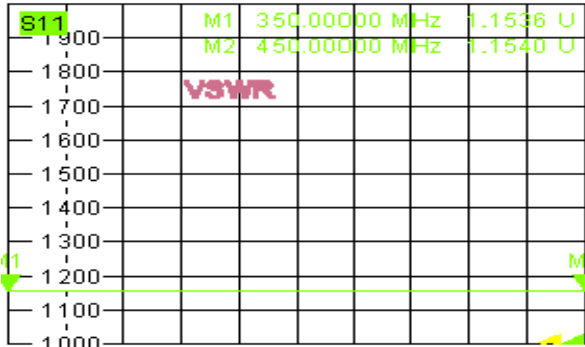


Typical Performance

1. Coupling Factor & Sensitivity, Isolation, VSWR

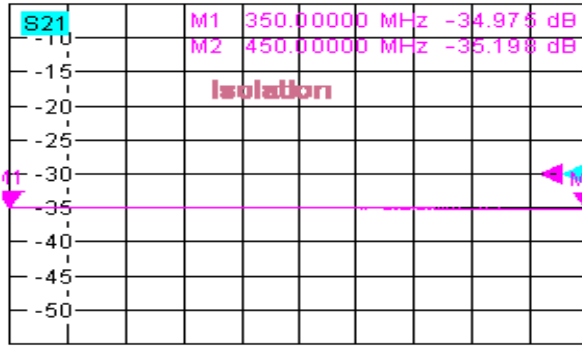


Trc1 **S11** SWR 100 mU/ Ref 1 U Cal
 Mem5[Trc1] **S21** SWR 100 mU/ Ref 1 U Invis



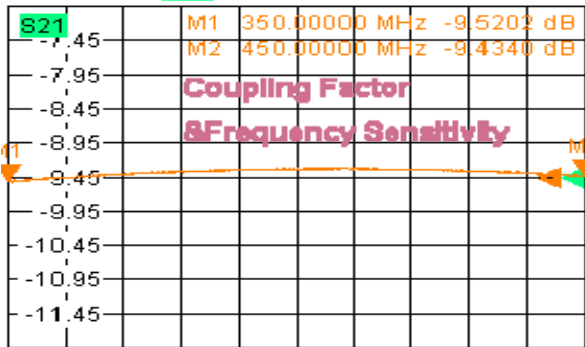
Ch1 fb Start 350 MHz dBm Stop 450 MHz

Trc2 **S21** dB Mag 5 dB / Ref -30 dB In
 Mem6[Trc2] **S21** dB Mag 5 dB / Ref -30 dB



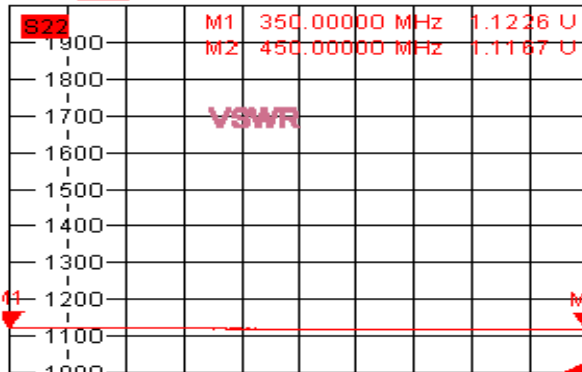
Ch1 fb Start 350 MHz dBm Stop 450 MHz

Trc3 **S21** dB Mag 0.5 dB / Ref -9.45 dB
 Mem7[Trc3] **S21** dB Mag 0.5 dB / Ref -9.45 dB



Ch1 fb Start 350 MHz dBm Stop 450 MHz

Trc4 **S22** SWR 100 mU/ Ref 1 U Cal 4



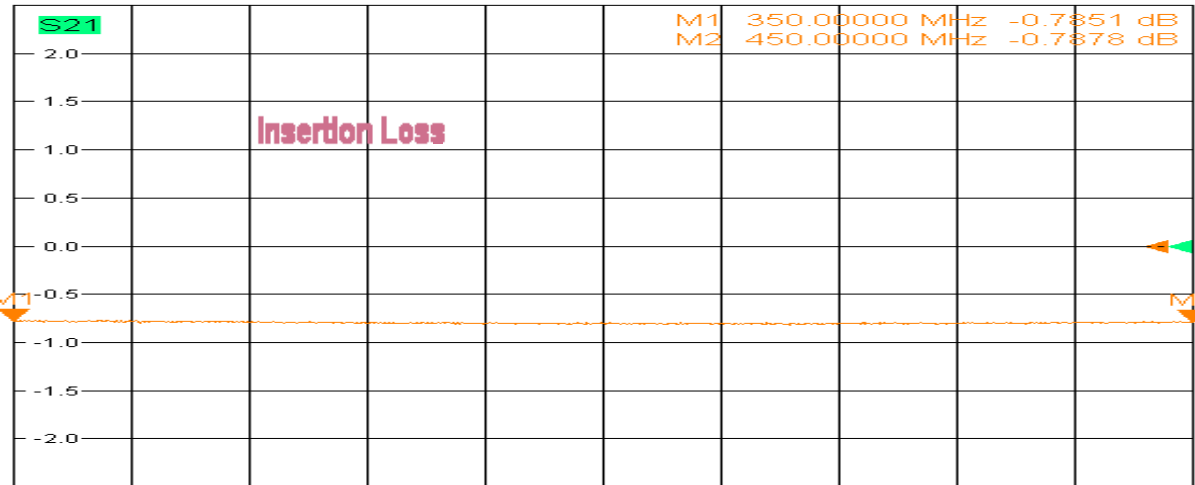
Ch1 fb Start 350 MHz dBm Stop 450 MHz

7/18/2018, 9:32 AM

2. Insertion Loss



Trc3 **S21** dB Mag 0.5 dB / Ref 0 dB Cal 3 (Max)
 Mem7[Trc3] **S21** dB Mag 0.5 dB / Ref 0 dB Invisible



Ch1 fb Start 350 MHz Pb 0 dBm Stop 450 MHz

7/18/2018, 9:33 AM

