

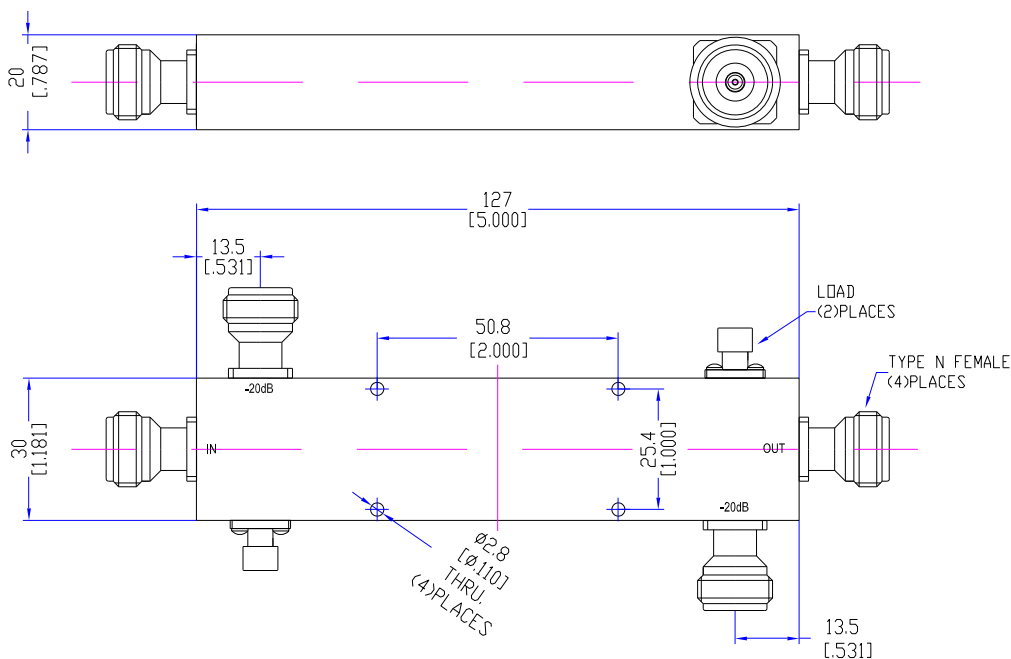
## Model TDC0505N20D

### Features

Low VSWR  
High Directivity  
Broadband & Miniature Size

Technical Data Sheet			
Frequency Range	480~520MHz	Finish	Painted Blue_ RAL #5007
Insertion Loss	≤0.5dB (Excl. Coupling Loss 0.08dB)	Connector Body	Brass, Tri-Alloy Plate
Coupling Factor	≤20±1dB	Housing	Aluminum, 6061 T6 Clear Chem Conversion Film
Coupling Sensitivity	≤±0.5dB	Connector Pin	Beryllium Copper, Gold Plate
Directivity	≥22dB	Solder	Lead Free, RoHS Compliant
VSWR	Primary ≤1.20:1 Secondary ≤1.20:1	Operating Temperature	-55~+85°C
<sup>1</sup> Power Handling	Pulse Power: 800 W Pulse length: max 100 μs Pulse Repetition Rate (PRR): 100 Hz	Operating Humidity	Up to 95%, Non- Condensing
Impedance	50Ω	Weight	280g
Port Connectors	N-Female		

<sup>1</sup>Power Handling guaranteed when load's VSWR within 1.50:1.

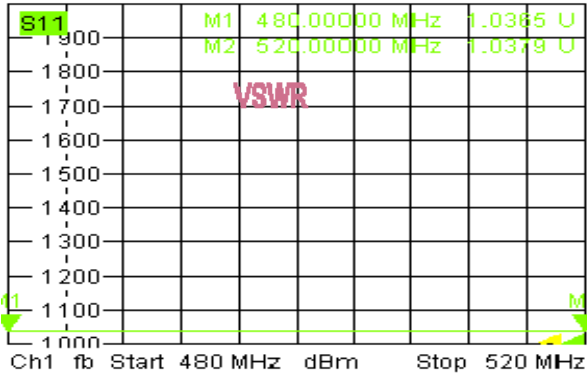


## Typical Performance

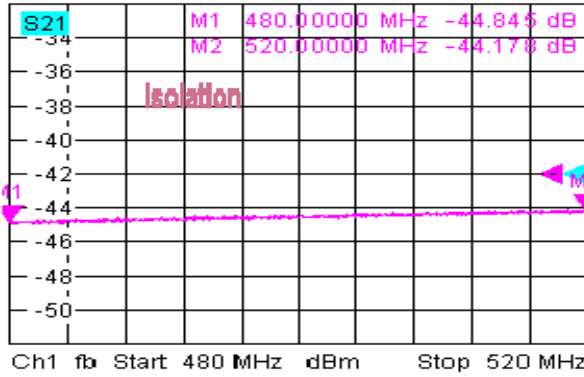
### 1. Coupling Factor & Sensitivity, Isolation, VSWR



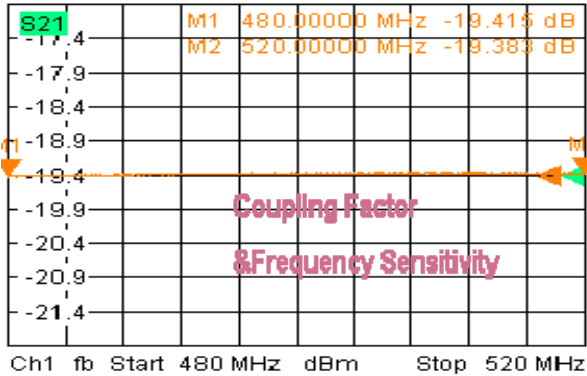
Trc1 **S11** SWR 100 mU/ Ref 1 U Cal  
 Mem5[Trc1] **S21** SWR 100 mU/ Ref 1 U Invis



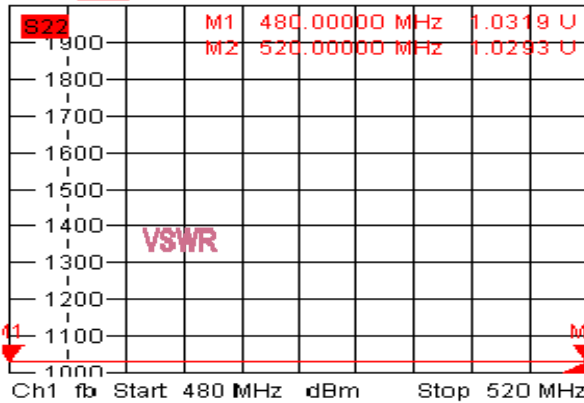
Trc2 **S21** dB Mag 2 dB / Ref -42 dB In  
 Mem6[Trc2] **S21** dB Mag 2 dB / Ref -42 dB



Trc3 **S21** dB Mag 0.5 dB / Ref -19.4 dB  
 Mem7[Trc3] **S21** dB Mag 0.5 dB / Ref -19.4 dB



Trc4 **S22** SWR 100 mU/ Ref 1 U Cal 4

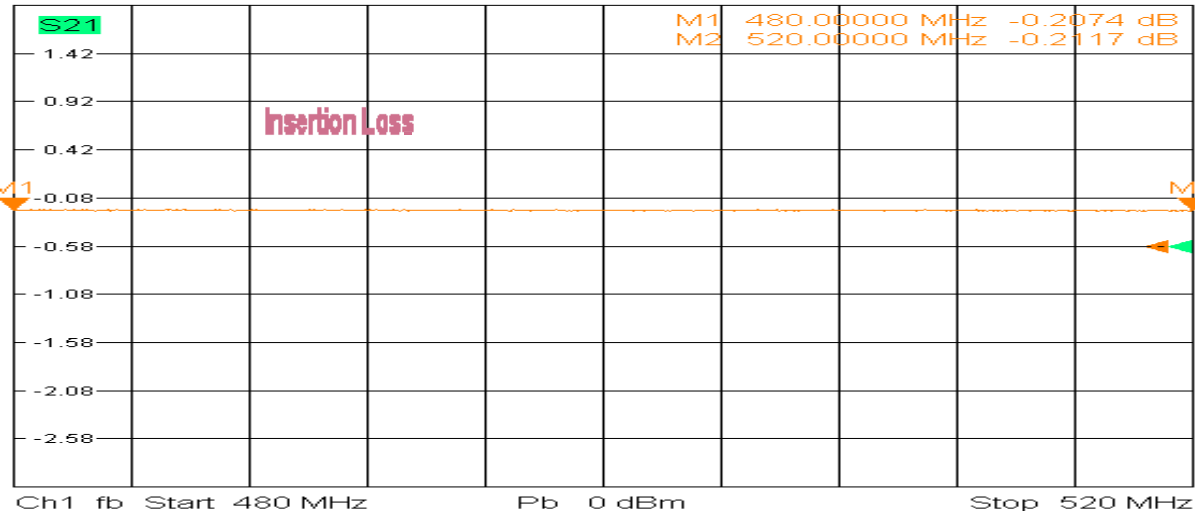


3/7/2019, 11:23 AM

### 2. Insertion Loss



Trc3 **S21** dB Mag 0.5 dB / Ref -0.58 dB Cal 3 (Max)  
 Mem7[Trc3] **S21** dB Mag 0.5 dB / Ref -0.58 dB Invisible



3/7/2019, 11:25 AM

