

## Model TPD0720A4G

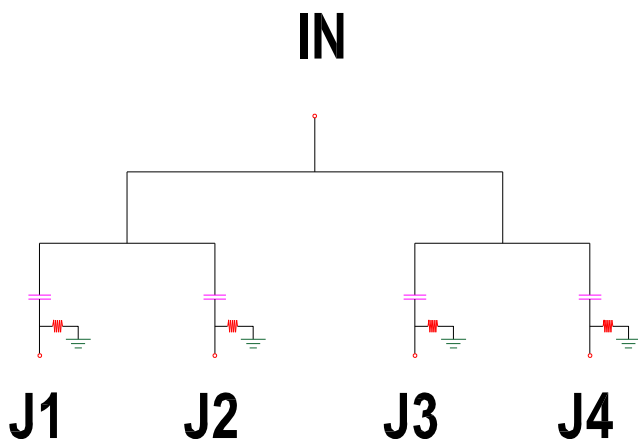
### Features

Excellent phase& amplitude balance  
Low Insertion Loss& VSWR  
High Isolation

Technical Data Sheet			
Frequency Range	0.7~2GHz	Finish	Painted Blue_ RAL #5007
Insertion Loss	≤3.4dB (Above 6.02dB Split)	Connector Body	Brass, Tri-Alloy Plate
VSWR	Input ≤1.70:1 Output ≤1.60:1	Housing	Aluminum, 6061 T6 Clear Chem Conversion Film
Isolation	≥20dB	Connector Pin	Beryllium Copper, Gold Plate
Amplitude Balance	≤±0.5dB	DC CURRENT	100 mA Max
Phase Balance	≤±8°	Solder	Lead Free, RoHS Compliant
DC-BLOCK	J1,J2,J3,J4 Port	Operating Temperature	-40~+65°C
<sup>1</sup> Power Handling	Forward ≤10Watt; Reversed ≤1Watt	Operating Humidity	Up to 90%,Non- Condensing
Port Connectors	SMA-Female	Weight	190g
Input Impedance	50Ω	DC VOLTEGE	14V Max

<sup>1</sup>Power Handling guaranteed when load's VSWR within 1.50:1.

### Schematic

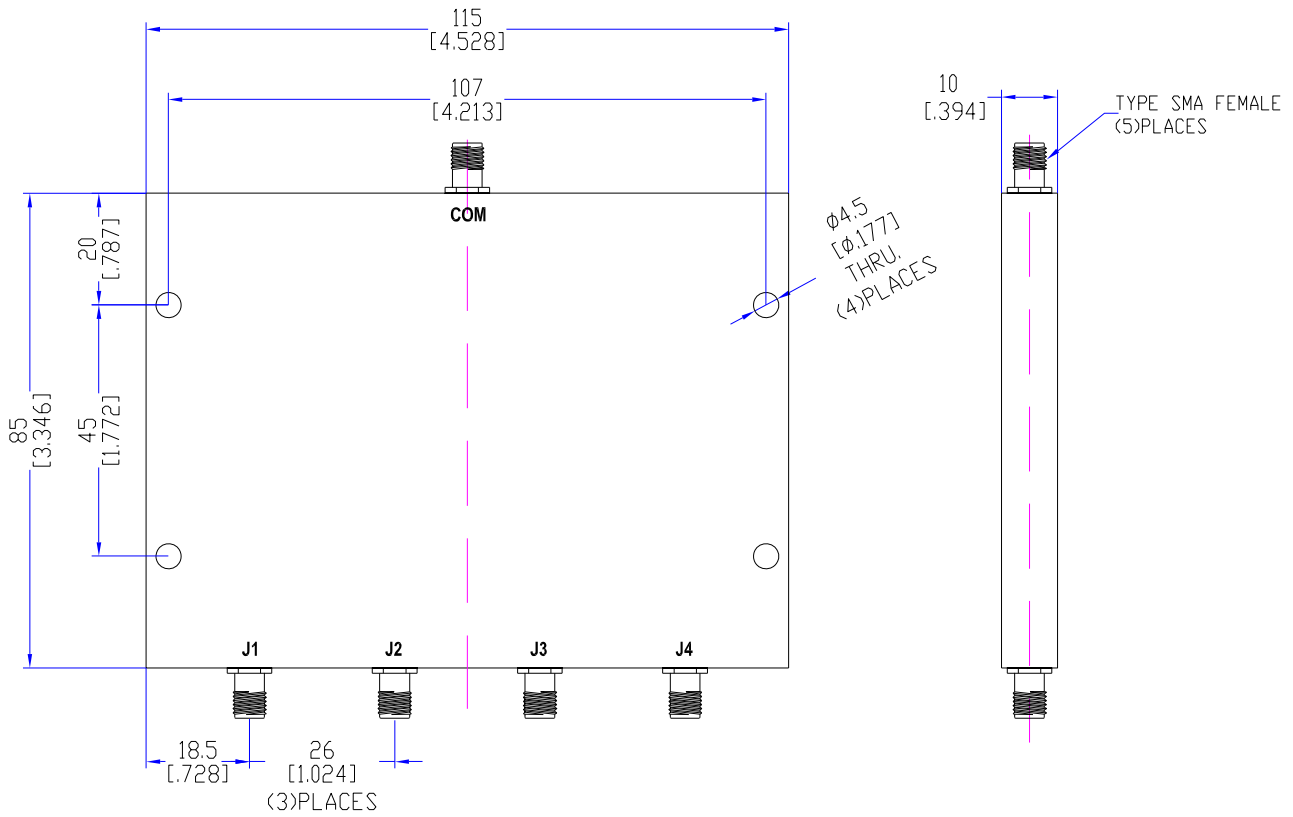


### Function

4-way, splitter; DC block J1, J2, J3, J4 port w/200Ω load.

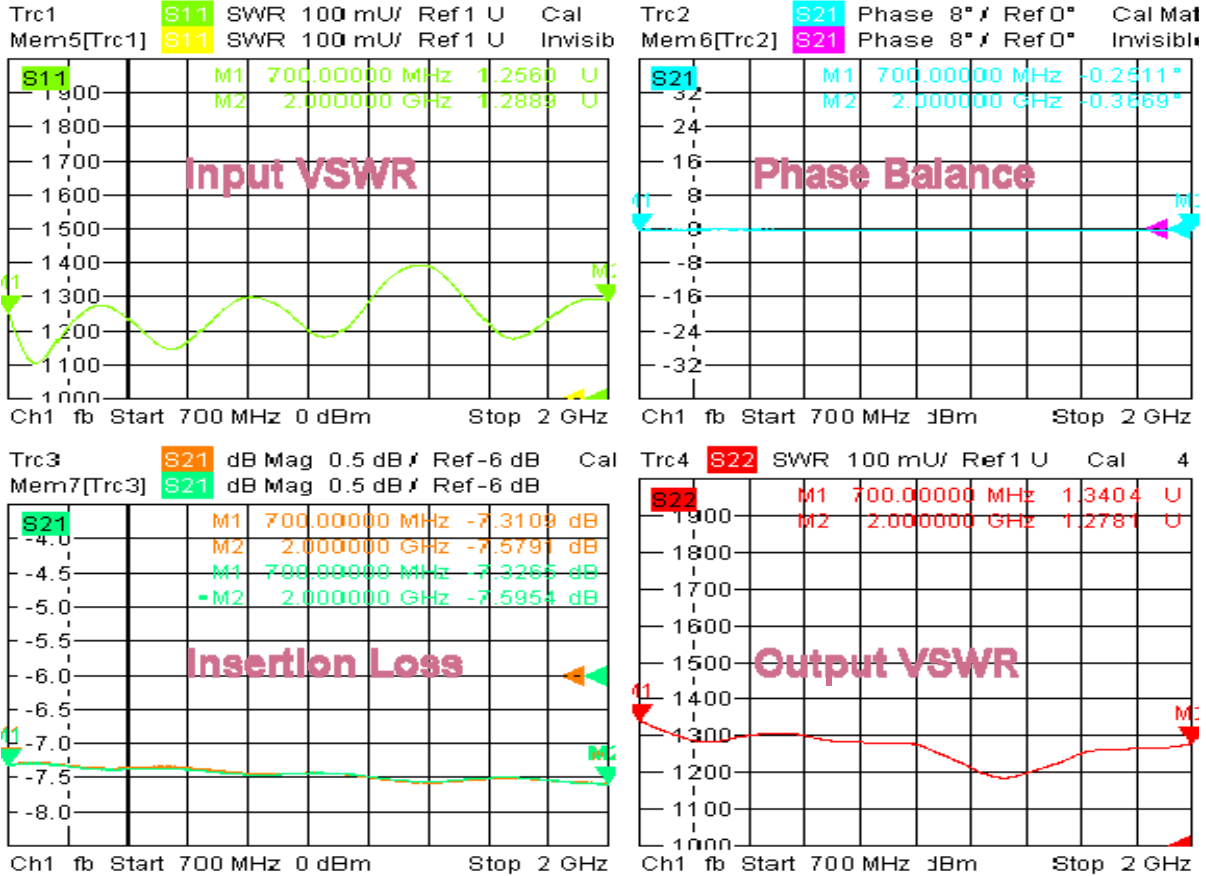


**Outline Drawing**



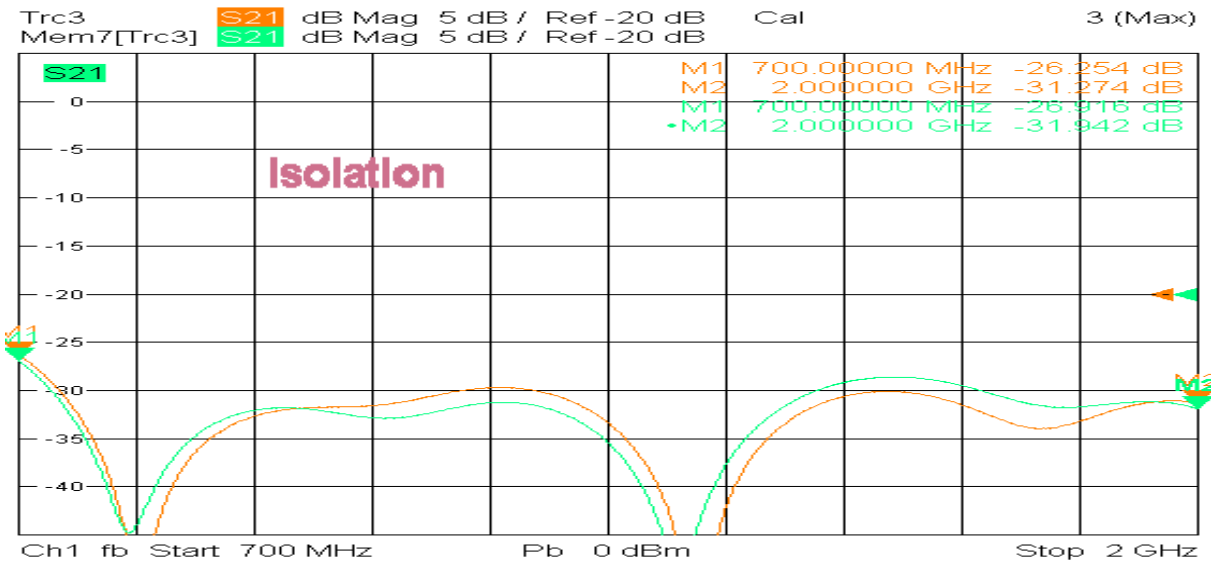
## Typical Performance

### 1. Insertion Loss, Amplitude & Phase Balance, VSWR



3/7/2019, 11:38 AM

### 2. Insertion Loss



3/7/2019, 11:33 AM

