

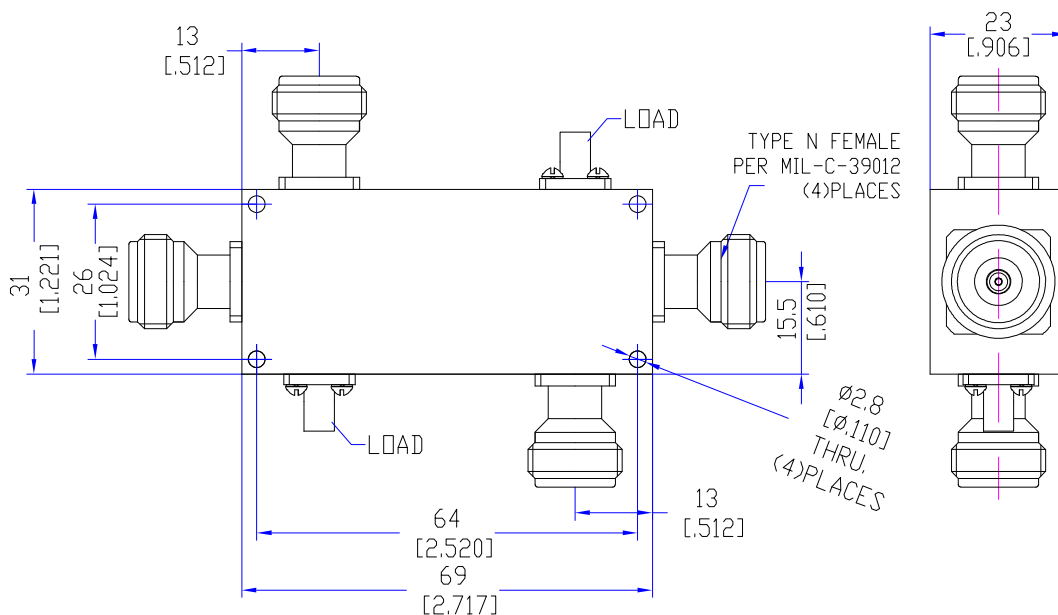
Model TDC0912N30D

Features

Low VSWR
High Directivity
Broadband & Miniature Size

Technical Data Sheet			
Frequency Range	950~1220MHz	Finish	Painted Blue_ RAL #5007
Insertion Loss	≤0.3dB (Excl. Coupling Loss 0.01dB)	Connector Body	Passivated Stainless Steel
Coupling Factor	≤30±0.5dB,	Housing	Aluminum, 6061 T6 Clear Chem Conversion Film
Coupling Sensitivity	≤±0.3dB	Connector Pin	Beryllium Copper, Gold Plate
Directivity	≥20dB	Solder	Lead Free, RoHS Compliant
VSWR	Primary ≤1.20:1 Secondary ≤1.20:1	Operating Temperature	-55~+85°C
¹ Power Handling	Incident ≤100Watt; Reflected ≤2Watt	Operating Humidity	Up to 95%, Non- Condensing
Impedance	50Ω	Weight	210g
Port Connectors	N-Female		

¹Power Handling guaranteed when load's VSWR within 1.50:1.

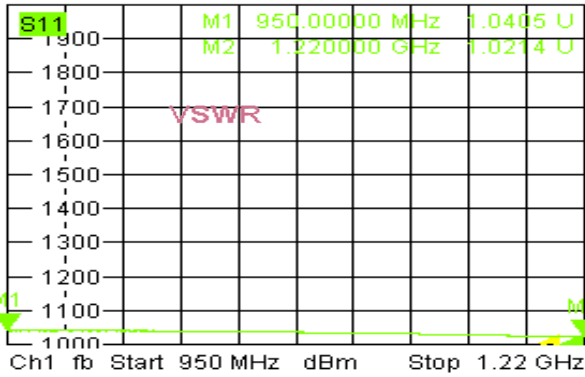


Typical Performance

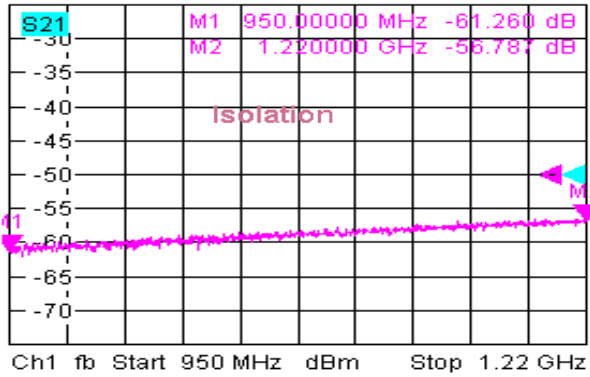
1. Coupling Factor & Sensitivity, Isolation, VSWR



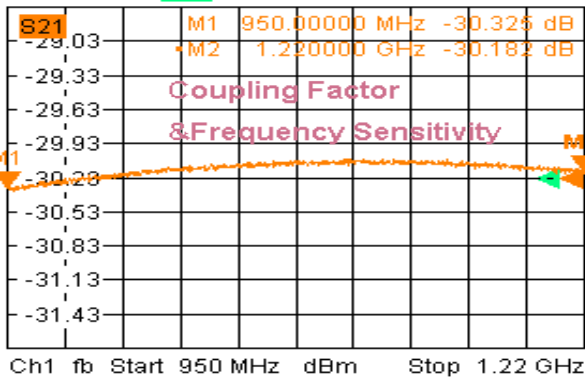
Trc1 Mem5[Trc1] **S11** SWR 100 mU/ Ref 1 U Cal Invis



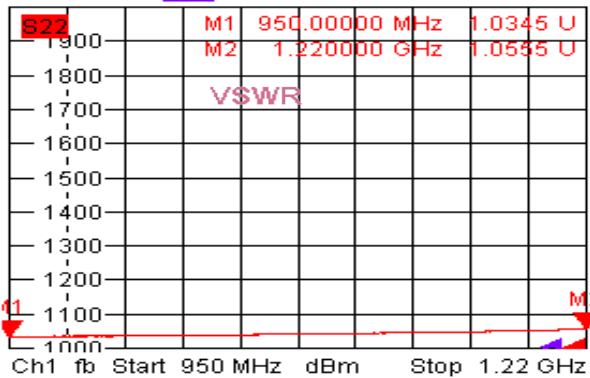
Trc2 Mem6[Trc2] **S21** dB Mag 5 dB / Ref -50 dB In



Trc3 Mem7[Trc3] **S21** dB Mag 0.3 dB / Ref -30.23 dB



Trc4 Mem8[Trc4] **S22** SWR 100 mU/ Ref 1 U Cal Invis

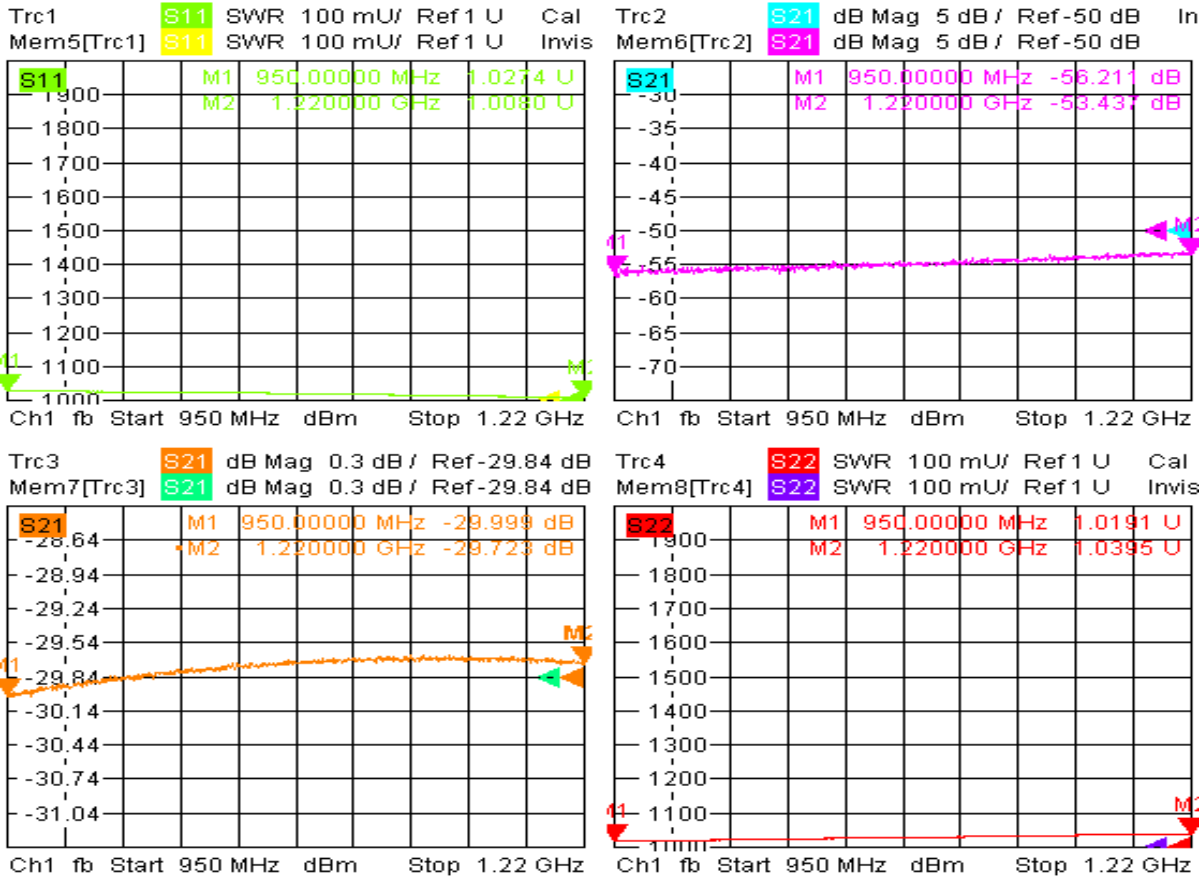


6/28/2019, 3:29 AM



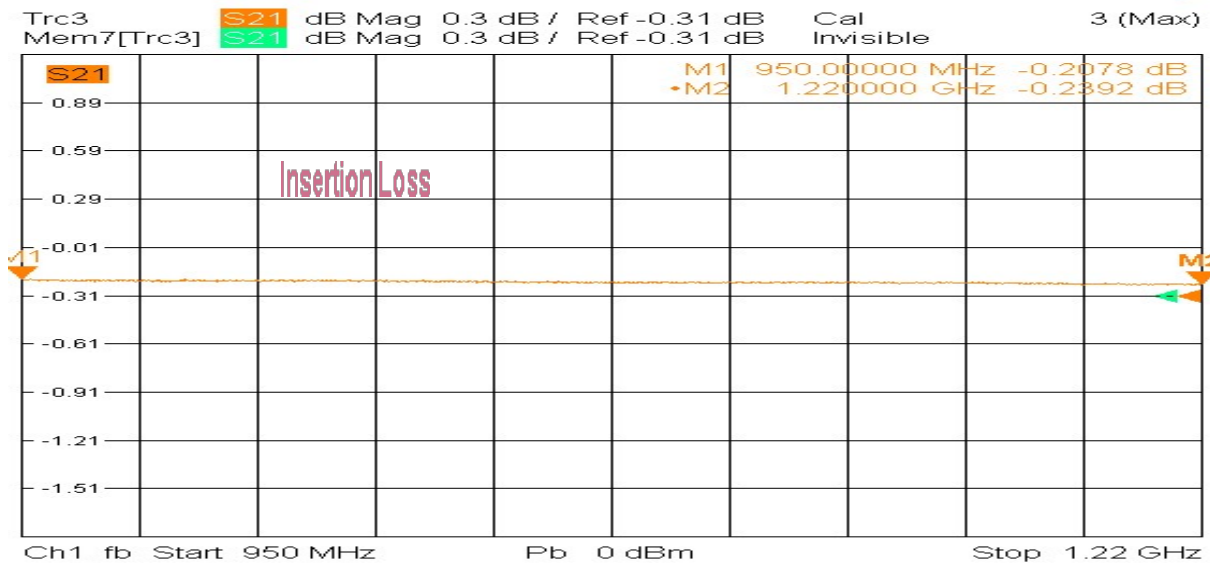
Typical Performance

2. Coupling Factor & Sensitivity, Isolation, VSWR



6/28/2019, 3:30 AM

2. Insertion Loss



6/28/2019, 3:31 AM

