

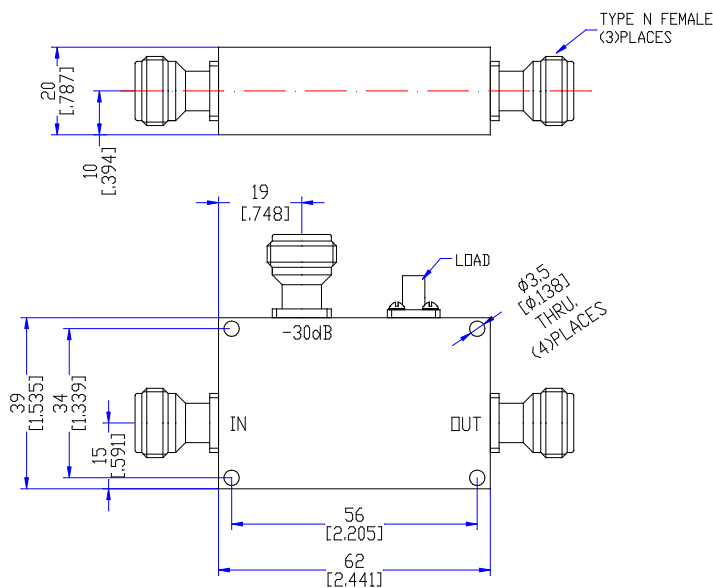
Model TDC2027H30

Features

Low VSWR
High Directivity
Broadband & Miniature Size

Technical Data Sheet			
Frequency Range	2.0~2.7GHz	Finish	Painted Blue_ RAL #5007
Insertion Loss	≤0.25dB (Excl. Coupling Loss 0.01dB)	Connector Body	Brass, Tri-Alloy Plate
Coupling Factor	≤30±1.0dB	Housing	Aluminum, 6061 T6 Clear Chem Conversion Film
Coupling Sensitivity	≤±1.0dB	Connector Pin	Beryllium Copper, Gold Plate
Directivity	≥20dB	Solder	Lead Free, RoHS Compliant
VSWR	Primary ≤1.30:1 Secondary ≤1.30:1	Operating Temperature	-55~+85°C
¹ Power Handling	Incident ≤300Watt; Reflected ≤5Watt	Operating Humidity	Up to 95%, Non- Condensing
Impedance	50Ω	Weight	170g
Port Connectors	N-Female		

¹Power Handling guaranteed when load's VSWR within 1.50:1.

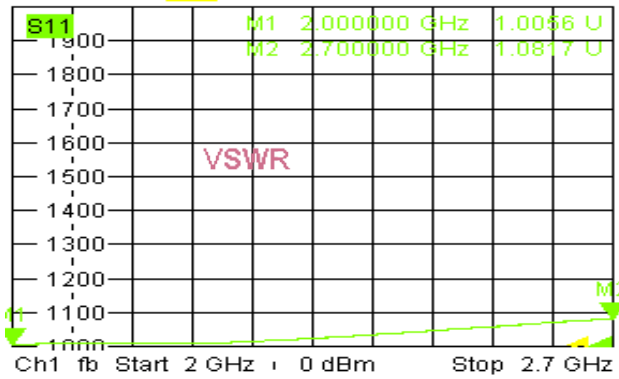


Typical Performance

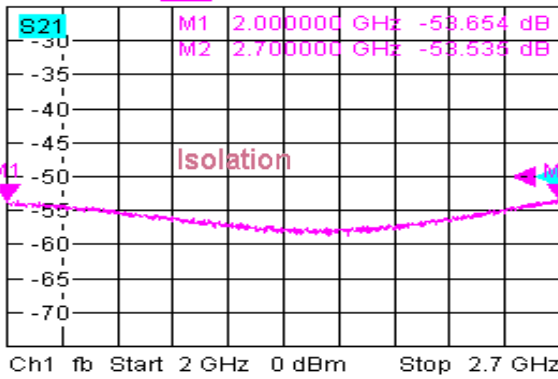
1. Coupling Factor & Sensitivity, Isolation, VSWR



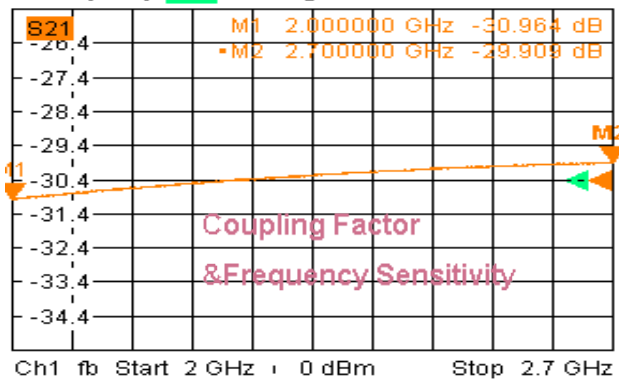
Trc1 Mem5[Trc1] **S11** SWR 100 mU/ Ref 1 U Cal Invisib



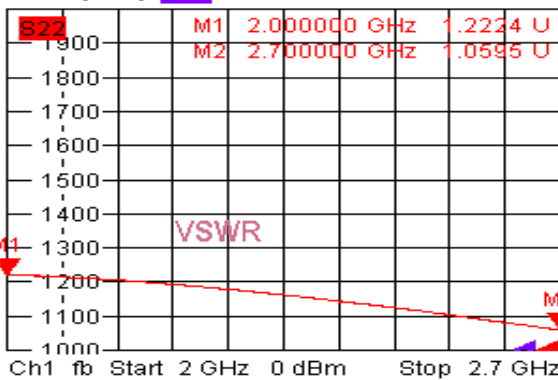
Trc2 Mem6[Trc2] **S21** dB Mag 5 dB / Ref -50 dB



Trc3 Mem7[Trc3] **S21** dB Mag 1 dB / Ref -30.4 dB C: In



Trc4 Mem8[Trc4] **S22** SWR 100 mU/ Ref 1 U Ca In

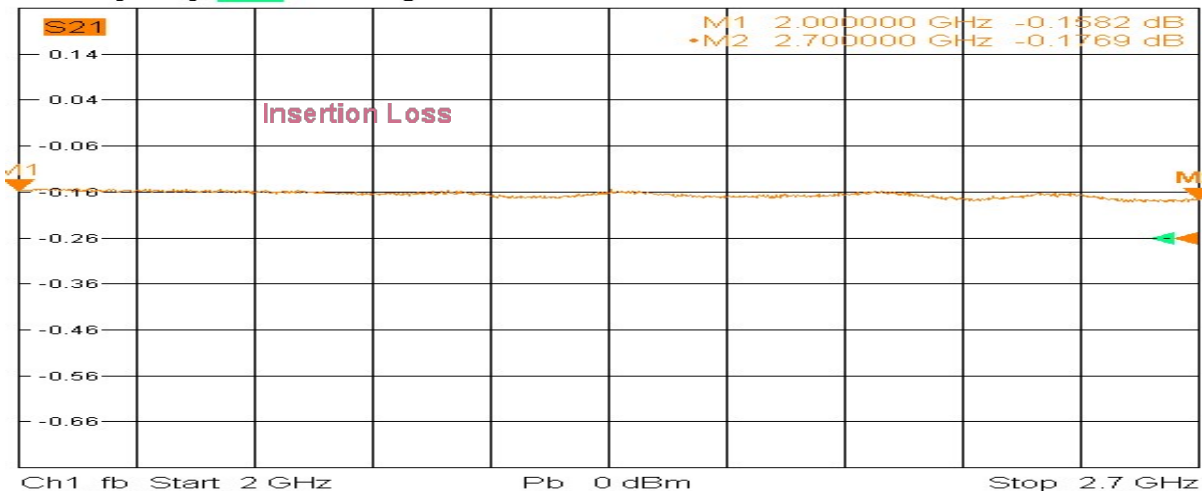


5/9/2020, 12:47 AM

2. Insertion Loss



Trc3 Mem7[Trc3] **S21** dB Mag 0.1 dB / Ref -0.26 dB Cal Invisible 3 (Max)



5/9/2020, 12:46 AM

