

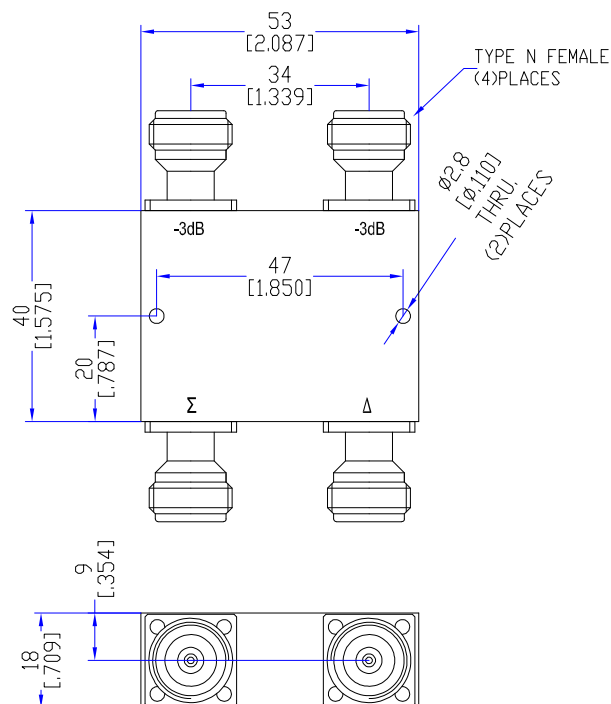
Model THC4950BN

Features

Excellent phase & amplitude balance
Low Insertion Loss & VSWR
High Isolation

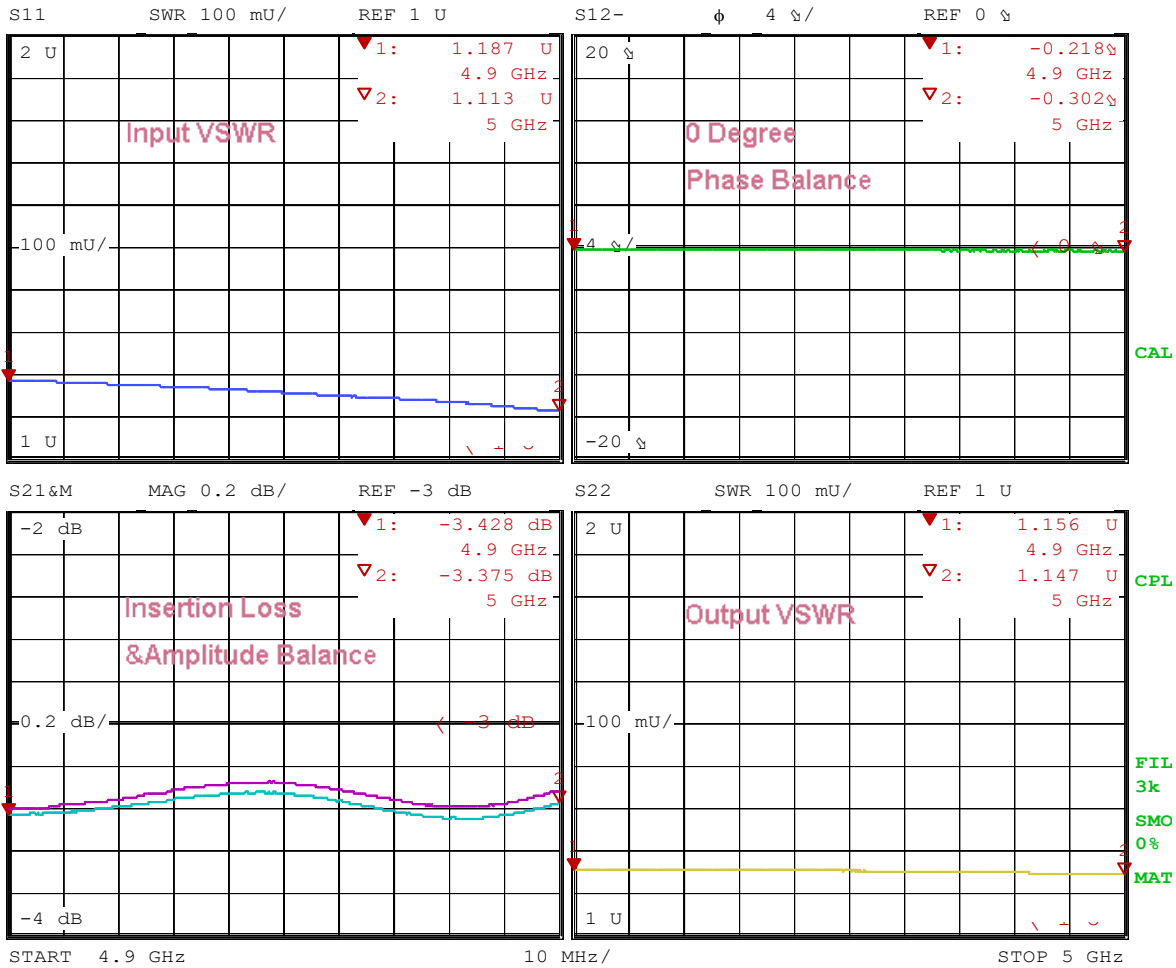
Technical Data Sheet			
Frequency Range	4.9~5.0GHz	Finish	Painted Blue_ RAL #5007
Nominal Split	3.01dB	Connector Body	Passivated Stainless Steel
Insertion Loss	≤0.6dB	Housing	Aluminum, 6061 T6
Isolation	≥20dB		Clear Chem Conversion Film
Amplitude Balance	≤±0.4dB	Connector Pin	Beryllium Copper, Gold Plate
Phase Balance	≤±4°	Solder	Lead Free, RoHS Compliant
VSWR	≤1.30:1	Operating Temperature	-55~+85°C
¹ Power Handling	Average ≤20Watt Peak ≤1KW	Operating Humidity	Up to 95%, Non-Condensing
Impedance	50Ω	Weight	180g
Port Connectors	N-Female		

¹Power Handling guaranteed when load's VSWR within 1.50:1.



Typical Performance

1. Insertion Loss, Amplitude & Phase Balance, VSWR_ 0°

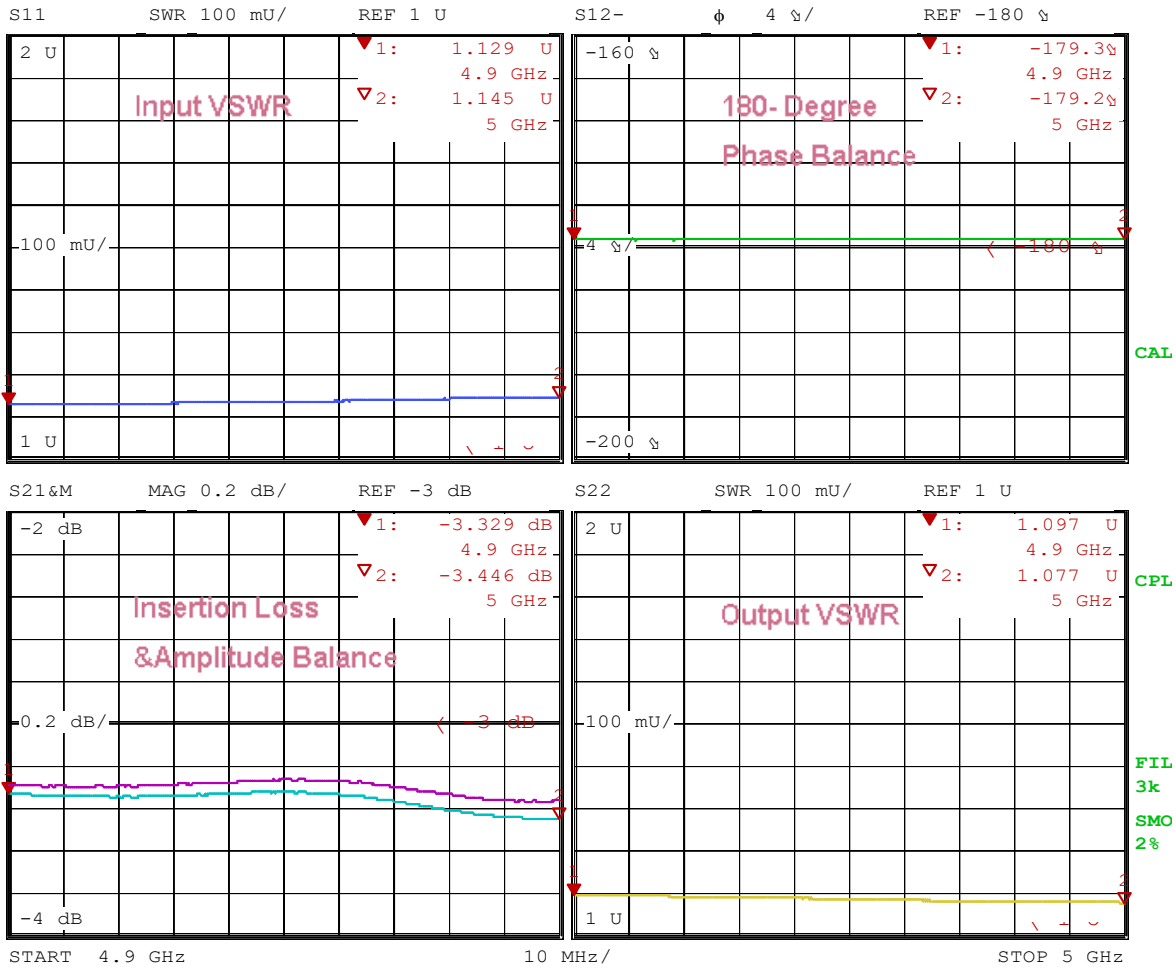


Date: 16.JAN.18 13:35:26



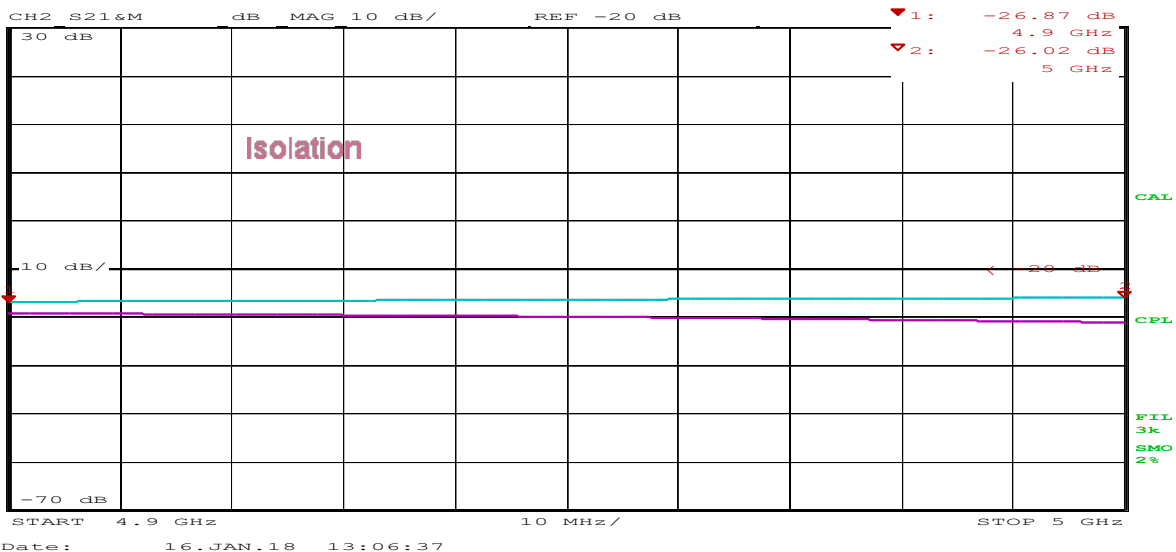
Typical Performance

2. Insertion Loss, Amplitude & Phase Balance, VSWR _ 180°



Date: 16.JAN.18 13:34:52

3. Isolation



Date: 16.JAN.18 13:06:37

