

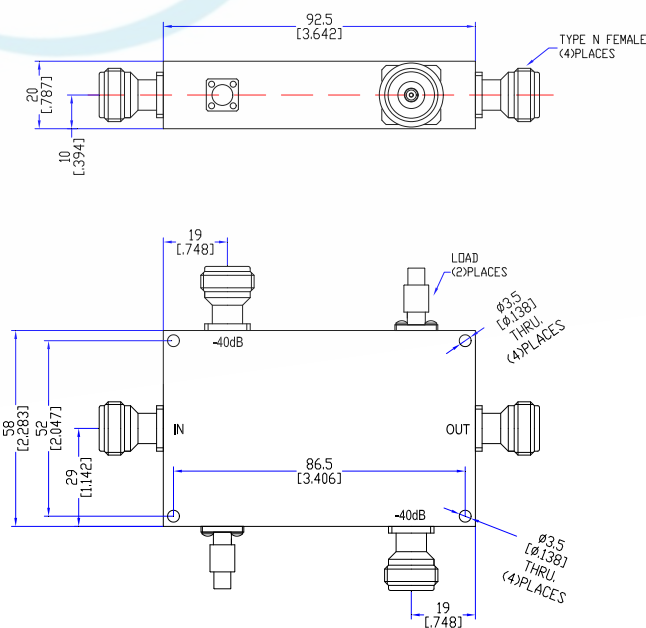
Model TDC1020H40D

Features

Low VSWR
High Directivity
Broadband & Miniature Size

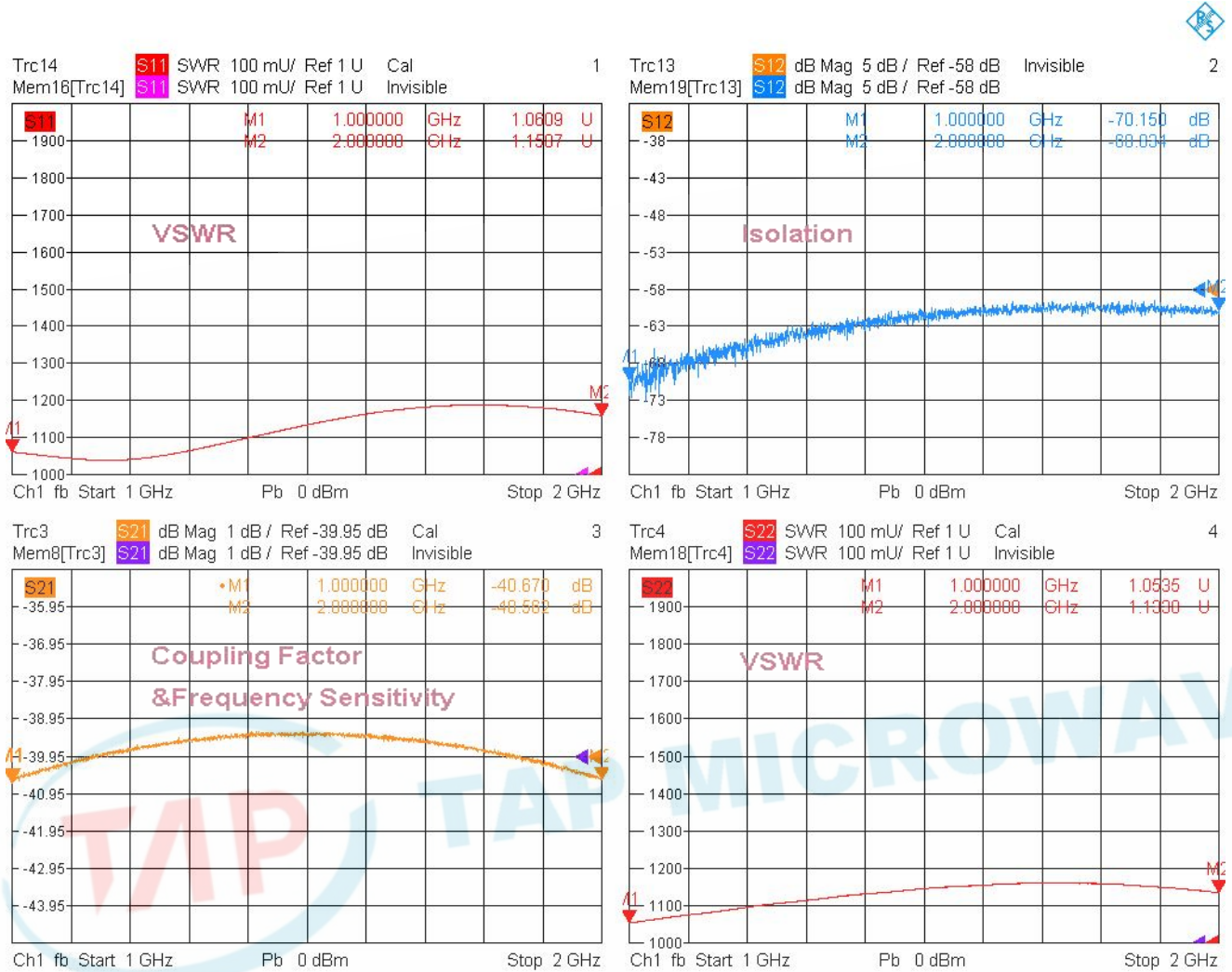
| Technical Data Sheet | | | |
|-----------------------------|--|-----------------------|---|
| Frequency Range | 1~2GHz | Finish | Painted Blue_ RAL #5007 |
| Insertion Loss | ≤0.25dB (Excl. Coupling Loss 0.01dB) | Connector Body | Brass, Tri-Alloy Plate |
| Coupling Factor | ≤40±1.0dB | Housing | Aluminum, 6061 T6 Clear Chem Conversion Film |
| Coupling Sensitivity | ≤±1.0dB | Connector Pin | Beryllium Copper, Gold Plate |
| Directivity | ≥18dB | Solder | Lead Free, RoHS Compliant |
| VSWR | Primary ≤1.30:1 Secondary ≤1.30:1 | Operating Temperature | -55~+85°C |
| ¹ Power Handling | Incident ≤200Watt; Reflected ≤200Watt | Operating Humidity | Up to 95%, Non- Condensing |
| Impedance | 50Ω | Weight | 110g |
| Port Connectors | N-Female | | |

¹Power Handling guaranteed when load's VSWR within 1.50:1.



Typical Performance

1. Coupling Factor & Sensitivity, Isolation, VSWR

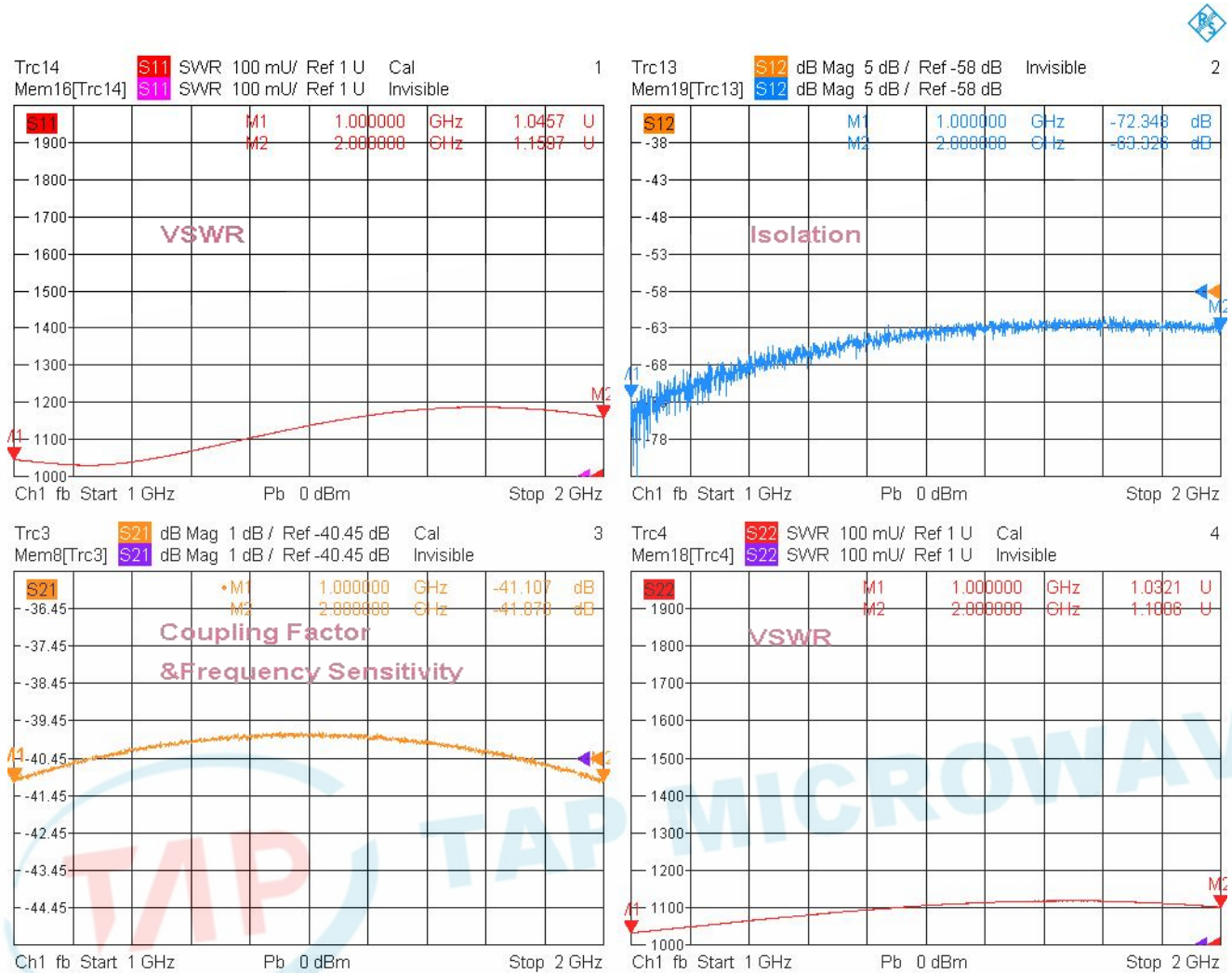


5/29/2023, 4:02 PM



Typical Performance

2. Coupling Factor & Sensitivity, Isolation, VSWR



5/29/2023, 4:00 PM

3. Insertion Loss



5/29/2023, 4:03 PM

